

R2 SPLITTER FOR RAM SRT10

Tools needed:

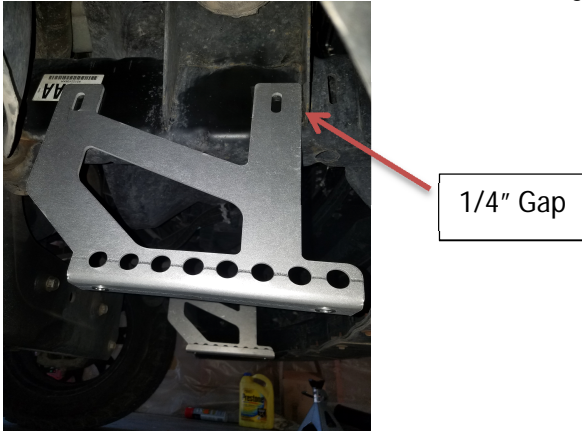
1. 7/32" Hex Bit Socket
2. Drill
3. 9/16" or 5/8" Socket/wrench
4. 18mm Socket
5. Center Punch
6. 25/64 Drill Bit
7. 1/4" Drill Bit

What's in the Box:

1. Splitter Plate
2. 2 Main Brackets, 2 Outer Brackets, Cross Strut. Plastic Spacers
3. Hardware

Steps:

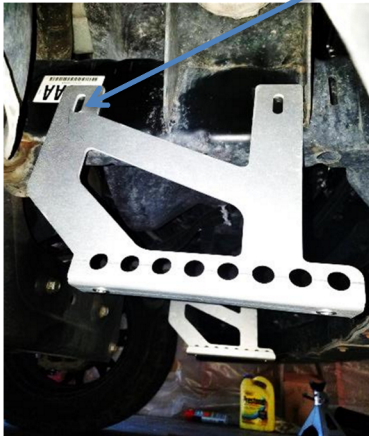
1. Begin by cleaning and wiping the frame rail so you can easily mark the where you will be drilling
2. Mock up the Brackets to the frame as shown. One of the vertical legs will be inside the body mount brace, allow approx. 1/4 inch gap between the body mount brace and bracket. Make sure the bottom of the bracket is level with the ground and at the same height as the bumper.



3. Once you have it where it needs to be, Mark the hole with a marker in the middle of the Oval Slot. This will give you some adjustment to make any final tweaks when bolting it up.



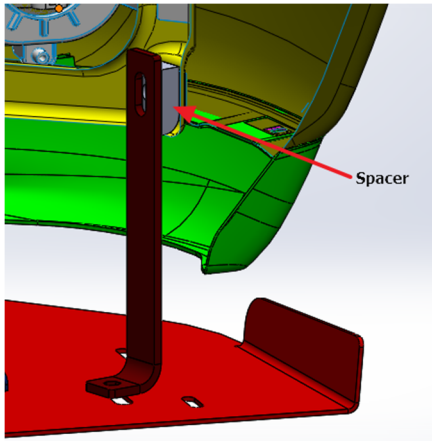
4. After you get them all marked up. Use the center punch. This will help the drill bit guide itself and keep it from walking. Now with the 25/64 drill bit, drill out the holes. (Do not go crazy with the big drill bit or try to make the wholes bigger. They need to be tight for next step)
5. For instruction on how to install the Rivet Nuts, See the Tutorial at www.kdesignswings.com . You will now need to install a Rivet Nut Here (Rear Vertical Leg). This applies for Driver and Passenger side



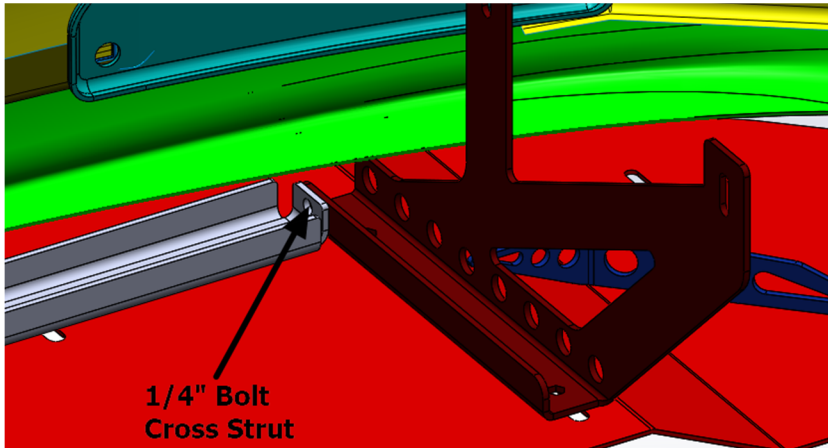
6. Now for the hole in the front Vertical Leg, Insert the Bolt with the washer and through one of the Hole in the bottom of the frame rail, insert the Nut. This can be a little tricky unless you have skinny fingers, Use a wrench to hold the nut by putting some tape on the nut so it doesn't fall off.



7. The outer brackets will now need to be installed. Remove the Bolt (18mm socket) on the bottom corner of the fog light bracket and insert the spacer in between the new bracket and the bumper with the leg pointing inwards and put the bolt back on. Use the new Carriage bolt provided. The bolt should be centered to the oval slot on the bracket. Adjust the height of the bracket if needed.



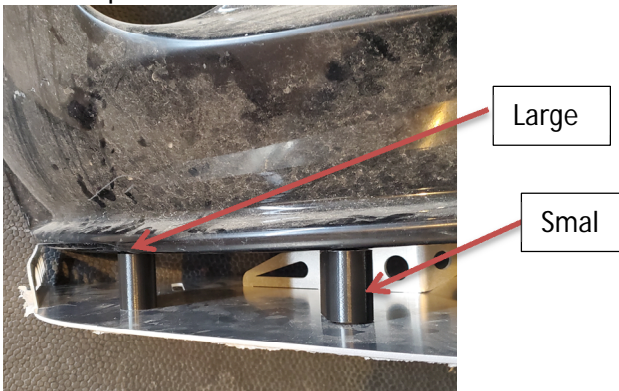
8. Install the Cross Member with 2 bolts and nuts provided as shown. The cross beam goes in between the 2 brackets.



9. Install the 7 Clip Nuts in the existing holes along the bottom of the splitter as shown here



10. Adjust the brackets so its level with ground and at the same height as the bumper and Tighten all the bracket bolts. Have a friend help you hold up the splitter while you bolt it up to the brackets, leave the splitter bolts loose. Now, insert the 4 Plastic spacers provided on the outer ends. The larger one is the rear and the short one goes in front. Use the Large bolts with washers provided. Leave all of the screws loose



11. Adjust the location of the splitter by pulling it in or out. If you want a really aggressive look, then pull it all the way out. If you're scraping too much or want a low-key look, then push it in. Once you got it where you want it, tighten down all the splitter bolts.
12. Installing the rods out front: The location for these will be up to you. However, it is strongly recommended that the rods are placed as far as part as possible. You will need a 1/4" Drill Bit