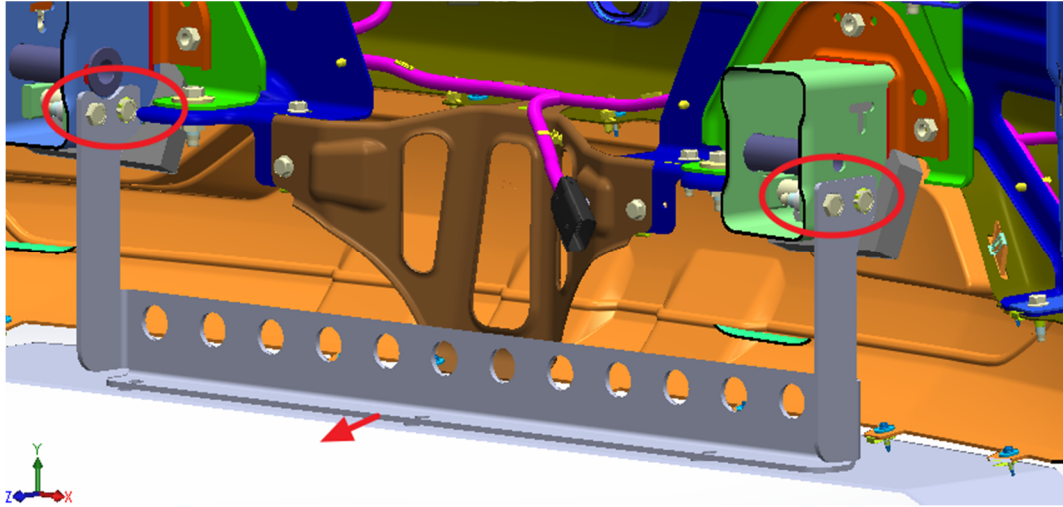


SPLITTER INSTRUCTIONS

2016-2018 SILVERADO

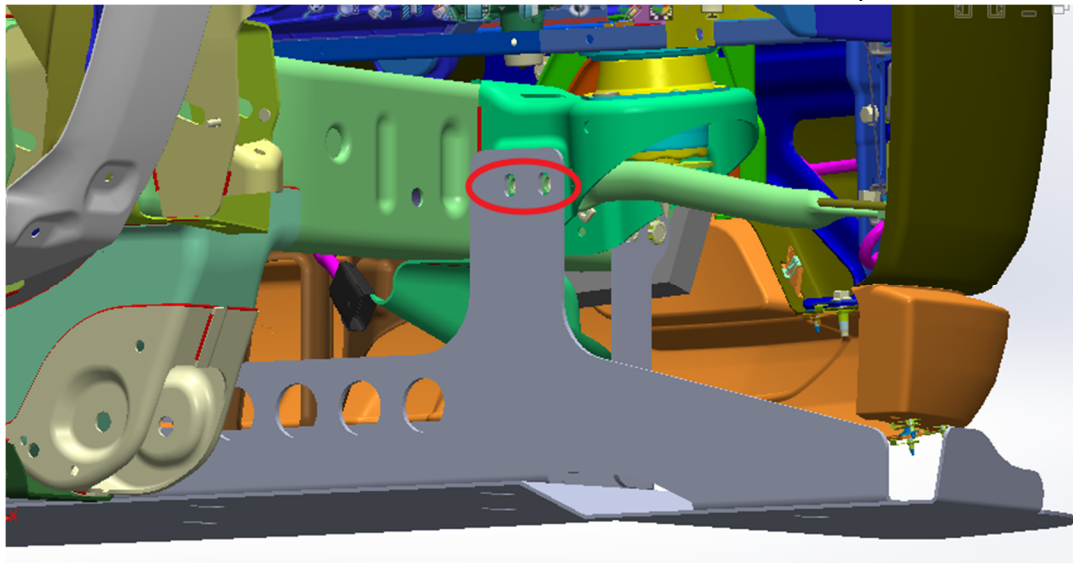
STEP 1:

INSTALL THE FRONT BRACKET USING THE SAME BOLTS FOR THE TOWHOOK. ENSURE THE BENT SIDES ARE FACING THE MOTOR. THE BRACKET WILL BE OFFSET FROM CENTER SINCE IT WILL BE BOLTING UP TO THE DRIVER SIDE OF THE FRAME RAILS. THIS IS OK. THE RIVET NUTS ARE THE ONES THAT ARE ACTUALLY CENTERED AND WILL LINE UP WITH THE SPLITTER PLATE.



STEP 2:

BOLT UP THE REAR BRACKET USING THE BUMPER'S BRACE BAR BOLTS,



STEP 3:

BOLT THE SPLITTER PLATE UP TO THE BRACKETS & ENSURE EVERYTHING IS TIGHT & SECURED

STEP 4:

INSTALLING THE SPLITTER SUPPORT RODS, THE SUPPORT RODS ARE RECOMMENDED BUT MAY NOT REALLY BE NEEDED DEPENDING ON YOUR SITUATION. LEAVING THEM OFF WILL ALLOW THE SPLITTER TO FLEX MORE IF YOU TEND TO SCRAPE A LOT, ESPECIALLY GOING INTO PARKING LOTS. HOWEVER, IF YOU TEND TO DO A LOT OF HIGH SPEEDS RUNS (OVER 100MPH), THAN IT IS HIGHLY RECOMMENDED THAT YOU INSTALL THEM. TO INSTALL THEM YOU MUST MOCK THEM UP AND MARK WHERE YOU WANT THEM (THE FURTHER APART YOU HAVE THEM THE BETTER. REMEMBER, THERE IS A BRACKET BEHIND THE BUMPER IN THE MIDDLE ALREADY) THEN USING A 3/16 DRILL BIT, DRILL THE HOLES ON BOTH THE SPLITTER AND BUMPER. KEEP IN MIND THAT YOU WILL NEED TO REACH BEHIND THE BUMPER TO PUT THE NUT ON. SO MAKE SURE YOU PUT THE RODS WHERE YOU CAN REACH.