

## R1 SPLITTER FOR DAYTONA & RUMBLE BEE

### Tools needed:

1. 7/32" Hex Bit Socket
2. Drill
3. 9/16 Socket/wrench

### What's in the Box:

1. Splitter Plate
2. 2 Brackets
3. Bolts
4. Drill Bits

### Steps

1. Begin by cleaning and wiping the frame rail so you can easily mark the where you will be drilling
2. Mock up the Brackets to the frame as shown. One of the vertical legs will be inside the body mount brace. Make sure the bottom of the bracket is level with the ground and at the same height as the bumper.

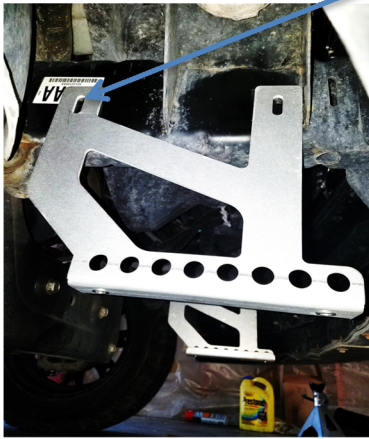


3. Once you have it where it needs to be, Mark the hole with a marker in the middle of the Oval Slot. This will give you some adjustment to make any final tweaks when bolting it up.



4. After you get them all marked up. Use the small drill bit first for a pilot hole. This will help the bigger drill bit guide itself and keep it from walking.... Now with the bigger drill bit, drill out the holes. (Do not go crazy with the big drill bit and try to make the wholes bigger. They need to be tight for next step)

5. For instruction on how to install the Rivet Nuts, See the Tutorial at [www.kdesignswings.com](http://www.kdesignswings.com) . You will now need to install a Rivet Nut Here (Rear Vertical Leg) Once installed, insert the bolt.



6. Now for the hole in the front Vertical Leg, Insert the Bolt with washer and through one of the Hole in the bottom of the frame rail, insert the Nut. This can be a little tricky unless you have skinny fingers, Use a wrench to hold the nut by putting some tape on the nut so it doesn't fall off.
7. Once you have all of the bolts in. Adjust the bracket so its level with ground and at the same height as the bumper and Tighten all the bolts
8. Now, have a friend help you hold up the splitter while you bolt it up to the brackets.
9. Adjust the location of the splitter by pulling it in or out. If you a really aggressive look, then pull it all the way out. If you're scraping too much or want a low-key look, then it might be best to push it all the way in. Once you got it where you want it, tighten down all 4 bolts.
10. Installing the adjustable rods out front: The location for these will be up to you. However, it is strongly recommended that the rods are placed as far as part as possible. Preferably near the 2 humps on the splitter edge. You will need to use the small drill bit provided to drill the holes for the rods. Make sure to use the small washers provided on the underside of the splitter and behind the bumper so it doesn't rip through. (**NOTE**, Rods may only work if the splitter is pulled all the way out)