

RX SPLITTER INSTRUCTIONS

Disclaimer:

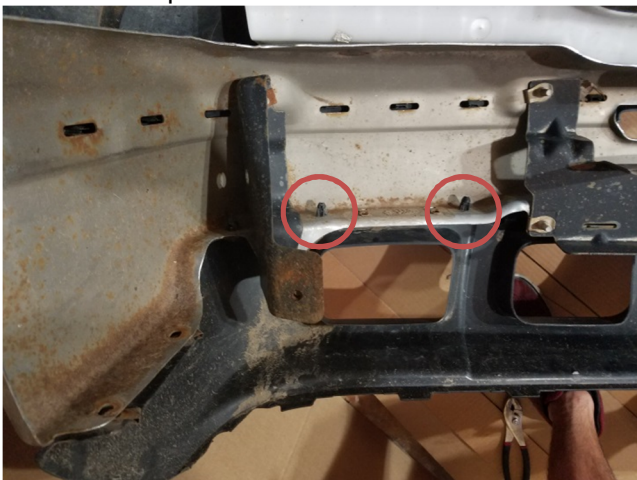
Due to the nature of the steel bumper being a stamped mass produced item, there are imperfections and many are not exactly identical. There for, the splitter and valance will require some adjustment such as enlarging holes, trimming and possibly pushing/bending in or out the side walls to allow a best fit. If there are any major miss-alignments, please contact us. Please keep in mind this is made from aluminum and will not flex as easy as the plastic valance. It will flex some, but not as much and there for you will need to be very care full when driving. If your ride has an air ride suspension, this shouldn't be an issue.

STEPS:

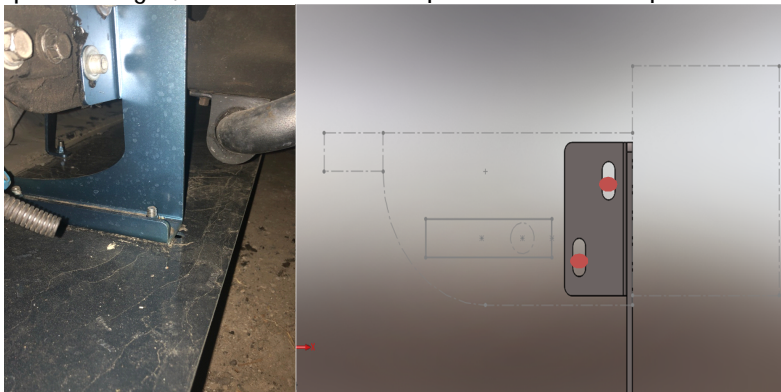
1. Remove the bumper: There are a total of 6 bolts (2 on the frame horn, 1 on the outer support) that will need to be removed and the whole bumper assembly will come off. Also make sure you disconnect the fog lights



2. With the bumper off, remove the plastic valance and ALL of the plastic clips along the bottom of the steel bumper.



3. If you have fog lights, you will need to remove them as well until you install the new valance.
4. Install the new valance without the grill and splitter. Use the new bolts provided. It goes directly where the plastic valance use to be. This is where you will need to do any tweaking/adjustment to the valance to insure a proper fitment.
5. Once the valance is installed, bolt on the grill with the screws provided. This also a good time to re-install the fog lights
6. Bolt on the splitter plate to insure proper fitment. Remove it when done.
7. Install Bumper with valance back on to the truck and insure everything lines back up.
8. You will now need to install the rear brackets. Mock them up as shown. The bottom of the bracket leg should be at the same height as the bottom of the valance. Once you find the optimal height, Drill 2x 7/16" holes per side and bolt up the brackets with the bolts provided.



9. Now bolt up the splitter plate and make sure everything is tight.
10. Lastly, install the splitter rods. With a 3/16" drill bit, drill 4 holes where you want the rods to be. If the rods are too long, you may need to install them at an angle. If that is not what you want, you may purchase shorter ones.