

## R1 SPLITTER FOR OBS SILVERADO/SIERRA INSTALLATION

### Tools needed:

1. 7/32" Hex Bit Socket
2. 17/32" Drill Bit for rivet nut
3. 1/16" Drill Bit for pilot hole
4. 3/16" Drill Bit for splitter rods

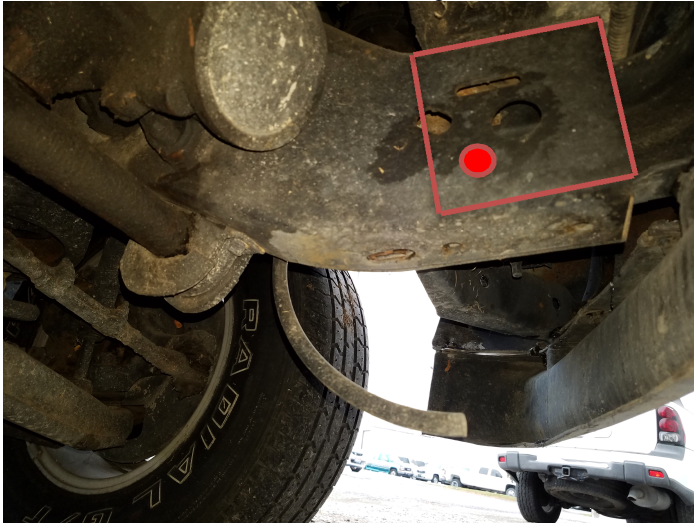
### What's in the Box:

1. Splitter Plate
2. 4 Brackets
3. Bolts, Washers, Rivet Nuts, Nuts
4. Hole template
5. Splitter Rods

### Steps

You will need to drill 2 holes into your frame and install 2 rivet nuts (provided) in order to mount 2 of the brackets. Use the 2 paper templates provided to locate the hole that you will drill (1 for passenger side, 1 for driver side).

1. Line up the template to the front, top, & bottom of the frame. Trace the hole in the template and use a smaller drill bit to drill a pilot hole. Then use the bigger 17/32" drill bit. Do not try to oversize the hole. It needs to be snug for the rivet nut.



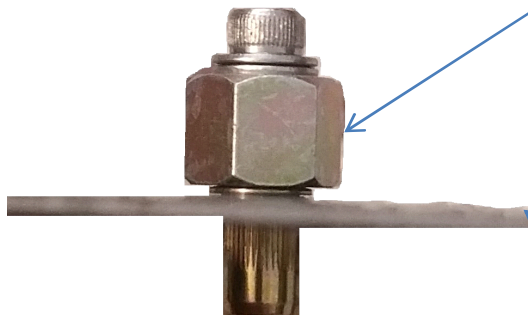
2. Install the Rivet Nut:

1. Slide the nut onto the Bolt.

**NOTE!!** Make sure the nipple on the nut is facing in this direction



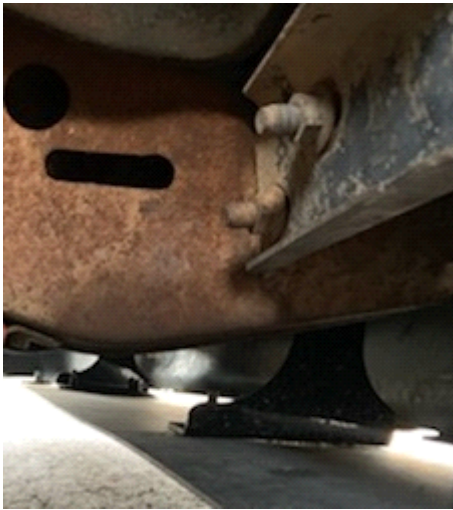
2. Add oil to the threads (or damage may occur to the threads) and Thread the Rivet Nut all the way onto the bolt and drop it into the hole.



3. Hold the Nut with a wrench and slowly tighten the bolt all the way tight until the Rivet Nut no longer moves (apply some inward pressure so the Rivet nut won't wiggle as you tighten it). DO NOT use power tools, it will damage the threads. Remove the bolt, washer, tool nut and repeat with the other holes.

Frame wall

3. Once the Revit Nuts are installed, Bolt the 2 bigger brackets. Make sure the bottoms of the brackets are at the same height of the bumper valance and the bent legs are facing inwards.



4. Bolt up the 2 small outer brackets to the bumper support. Make sure they are at the same height/level as the valance



5. Once all of the brackets are bolted and leveled, Tighten them up & Bolt up the splitter.
6. Adjust the location of the splitter by pulling it in or out to best suit your situation. Once you got it where you want it, tighten down all 6 bolts.

7. Installing the adjustable rods out front: The location for these will be up to you. But we highly recommend that you put them in between the outer bracket and middle brackets. The further apart, the better. You will need to use the 3/16" drill bit to drill the holes for the rods.